

Park Center

Recovery From Mental Illness

Who We Are

Park Center has been serving Nashville for over 35 years, providing a place for hope and recovery for people experiencing serious mental illness, homelessness and addiction.

What We Do

Park Center provides support through treatment, housing, day programs, homeless outreach and employment services.

Our Mission

Park Center empowers people with mental illness and substance use disorders to live and work in their communities.



How Are We Different?

Park Center is not a clinical setting. We are a mental health recovery center. Our programs focus on the whole person. We refer to persons served as “members”, rather than "clients." We believe that a person is not defined by their illness, so our programs promote wellness and recovery.

Locations

We have three locations in Nashville:

- Park Center (186 N. 1st St.)
- Park Center East (948 Woodland St.)
- Park Center North (4501 Gallatin Pike)



Programs

Co-Occurring
Services

Emerging Adults
Services (ages 18-25)

Homeless
Outreach/SOAR

Psychiatric
Rehabilitation

Residential Services

Supported
Employment

Residential Services

Park Center is the largest housing provider designed for individuals with mental illness and co-occurring disorders in the Nashville area.

Our Residential Services programs have a housing capacity of 126 beds.

We offer two types of housing programs:

- Permanent Supportive Housing
- Supported Housing



Permanent Supportive Housing

Permanent Supportive Housing is a program for people living with a serious mental illness and co-occurring disorders.

- Our 1-, 2-, and 3-bedroom housing units are for single, unaccompanied adults (no partners or children).
- Housing units are located in East Nashville, Inglewood, Madison and Germantown, near resources and bus stops.
- Staff check in at least twice each month.



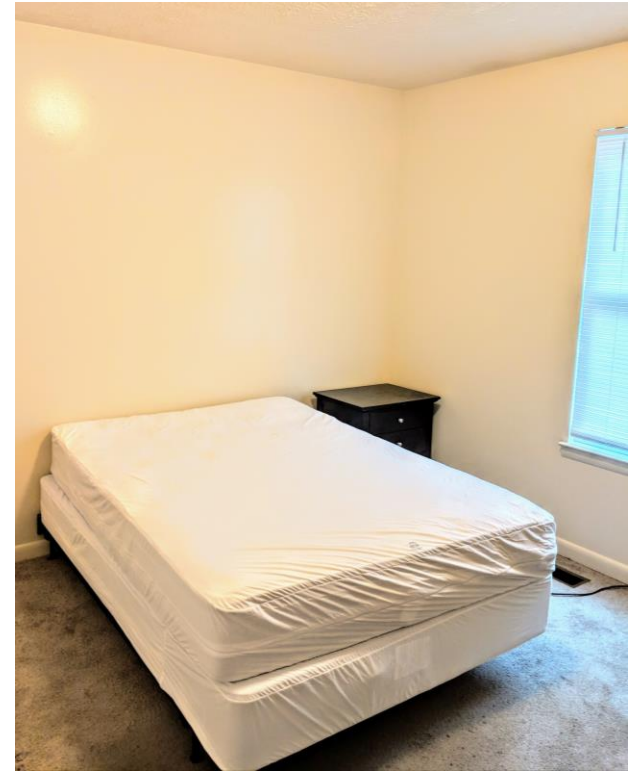
Permanent Supportive Housing Photos



Kitchen



Living room



Bedroom

Supported Housing

Supported Housing is a psychiatric rehabilitation (PSR) housing program for people living with a serious mental illness and co-occurring disorders. This program is designed to help people learn the skills needed to transition to independent living.

- Staff provides individualized coaching and educational groups on mental and physical wellness, as well as cooking, cleaning, and hygiene
- Each individual shares a bedroom with one person.
- Staff is on duty 24/7.



Eligibility

Permanent Supportive Housing

- Individuals with a serious mental illness or co-occurring disorder.
- Must be sober at least 6 months or 3 months if currently in treatment.
- Must have income and be able to pay rent and daily living expenses.
 - 1-bedroom units: rent is 30% of income
 - 2- and 3-bedroom units: rent is \$375. Tenants will be responsible for paying electric bill.
- Cannot be on the sex offender registry.

Supported Housing

- Individuals with a serious mental illness or co-occurring disorder.
- Requires TennCare and income.
- Must be interested in participating in daily PSR activities.
- Must be able to pay rent of \$500 (includes food and utilities).
- Cannot be on the sex offender registry.

Reasons One Would Not Be Eligible

- Intellectual disabilities
- Certain diagnoses
- Sex offender registry

Emerging Adults Housing

We provide two types of housing for men and women ages 18-25.

- *Supported Living* (24-hour care) for women.
- *Community Living* for men and women (separate houses) with regular staff check-ins during the week.



Eligibility

Emerging Adults Housing

- Individuals between 18-25 years old who have a primary diagnosis of a severe mental illness or severe emotional disturbance.
- History of mental health hospitalization, foster care or have very low income.

Note: Individuals do not need to have income or insurance to be eligible for Emerging Adults Housing.

Referrals

Visit www.parkcenternashville.org/refer.

Complete the online referral form and release of information form.

Our Intake Coordinator will reach out to you within 2 business days with next steps.



Questions? Email referral@parkcenternashville.org

Reasons One Would Not Be Eligible

- Intellectual disabilities
- History of sexual violence

Questions?

Contact Us

David Langgle-Martin, Director of Residential Services



David.langgle-martin@parkcenternashville.org



615-887-8460

Julia Barlar, Director of Emerging Adults Services



Julia.barlar@parkcenternashville.org



615-708-1056



www.parkcenternashville.org



615.242.3576



186 N. 1st St. Nashville, TN 37213

Thank You!