



IMPACT REPORT 2022



Our Mission:
Empower people who
have mental illness and
substance use disorders
to live and work in their
communities.

www.parkcenternashville.org

Front Cover: Ashley Blum, Aaron M., and Katelynd Frierson

Letter from Will Connelly

This year is looking brighter than ever for Park Center members. In a few months, we will open a new location in Hillsboro Village. Hillsboro Village is home to major universities, energetic changemakers, thriving businesses, cultural centers, and passionate and caring citizens. We are honored to move to this historic community, and we look forward to supporting the needs of the neighborhood by supporting conversations around mental health, addiction, and homelessness. We belong in Hillsboro Village just like we belong in encampments, in emergency rooms, and other places where people are looking for support and belonging.

Across the Cumberland River, our community space in East Nashville at 948 Woodland St is getting a much-needed refresh! We have a brand-new roof and mural, and we will begin work on interior renovations in a few months. Our hope is that this hub will continue to be a place where people can find support, meaning, and feel a genuine sense of belonging. We need to feel like we belong now more than ever.

This next year is only possible with the support of people like you. Thank you.



WILL CONNELLY,
CEO

A new home in Hillsboro Village



Park Center is excited to announce that we are moving our addiction recovery services (Intensive Outpatient Program), supported employment services, housing, and administrative offices to 1935 21st Ave S. The pandemic helped us reflect on what matters - Park Center members.

Our current location at N 1st St has tons of space, but we all need and want home-like, inviting, warm, and welcoming spaces that reflect our values. We found this in our new location in Hillsboro Village. Surrounded by college campuses and a bucolic neighborhood, we are thrilled to inhabit a space that is cozy and provides a sense of togetherness. The connectivity to transit and new neighbors make it a prime location for current and future members. We also hope that this space will become a beacon for the area, where we can invite other groups to use our space, connect, and grow as one. Stay tuned in the coming months for announcements on the move and all the new opportunities our new home will bring.

Impact



161 members found affordable housing

88 members worked on their substance use recovery



77 members gained skills to better manage their mental health



39 Emerging Adults members pursued employment and education

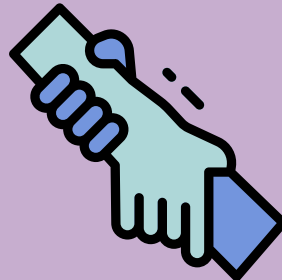


963 members received compassionate care and support

101 members found competitive employment of their choosing



499 individuals experiencing homelessness got access to services and housing



Donor Spotlight: A Compassionate Grantmaker

Park Center is grateful for the sustained philanthropic commitment that The Healing Trust has contributed since 2006. Since the beginning of The Healing Trust's philanthropy in Middle Tennessee, Park Center has been a consistent beneficiary. As partners, Park Center and The Healing Trust make healthcare accessible for many in our community, helping us serve thousands of our friends and neighbors.



As The Healing Trust's President and CEO, Kristin Keely-Dinger says, "The pandemic has exacerbated the mental health and recovery needs in our community, which highlights the life-changing impact that Park Center has. We are grateful for all the ways that they serve the community." Philanthropy is powerful, and it changes lives. Park Center is glad to partner with The Healing Trust to support the community and make Nashville and Middle Tennessee a healthier place for our neighbors.

Thank you to our 1984 Society Members Your commitment makes a difference.

DATA AS REPORTED JULY 2021 - JUNE 2022

Anonymous
Blue Cross Blue Shield of
Tennessee Community Trust
Carr, Riggs & Ingram
Cherry Bekaert
Community Foundation of Middle
Tennessee
Fishel Family Foundation
HCA Foundation
Pinnacle Financial Partners
Sherrard Roe Voigt & Harbison
The Doy and Margaret McCall
Family Foundation
The Healing Trust
The Marjorie Neuhoff Foundation
Truist

United Way of Greater Nashville
Vanderbilt University
Kelly and Doug Berry*
Dawn and Nick Bishop*
Helen Gaye and Earl Brewster*
Webb and Donna Campbell*
Bill and Chris Carver*
Webb and Donna Campbell*
Barbara Daane*
The Honorable Daniel and Jill Eisenstein
Farzin Ferdowsi
Luke Froeb
Pete and Stephanie Greenfield
Mark and Emily Griffin*
Joanna & Anders Hall*
Leslie Hay

Donald and Louise McKenzie
Jameson and Anna Norton
Amy Thompson*
Diane and John Titus*
Eric Werner*
Joni Werthan
The Honorable Bill and Jane Young*

